

**The Queen Elizabeth Hospital
Mindful of Dementia – Dementia Open Day
14 September 2010**



Sue Sharp at the Western Adelaide Dementia Planning Group Display

Western Adelaide Dementia Planning Group WADPG were invited to hold a display at the Mindful of Dementia – Dementia Open Day at TQEH on Tues 14 Sept. Congratulations are extended to the organisers at TQEH and Alzheimer’s Australia SA for a very informative and interesting and entertaining day. The day was extremely successful and well attended by professionals and community members. A comprehensive program provided a unique professional development opportunity with guest speakers from SA&NT Dementia Training Study Centre, TQEH, Dementia Collaborative Research Centres and Alzheimers Australia. Graham and Pat Anders provided insight into the lived experience from the perspective of a person living with dementia and their Carer.

The WADPG display was well received and provided an opportunity to raise the profile of the workgroup. Service providers and community members were provided with copies of the Dementia Resources WADPG has developed and general information to encourage agencies to participate. More comprehensive feedback and evaluation of the day will be provided by the organising agencies.

Special thanks to Commonwealth Carelink for the “show bags” that we were able to pre-pack with resources. Special thanks also to ACH and Dom Care SA for assistance with the display.

The Western Adelaide Dementia Planning Group meets on the third Tuesday of each month 9.30 – 11.00pm at Dom Care SA Woodville, 21a Belmore Tce, Woodville Park Mareeba Building Rm 15. For further information contact Susan Sharp ph; 8440 6737 or email susan.sharp@dfc.sa.gov.au

September 2010

In this issue.....

Dementia Action Group

Social Isolation

In Home Services

Respite

Mind the Gap – closing soon!

How to contact us:

Project Officers:
Susan Sharp (Tues & Thurs) 8440 6737
susan.sharp@dfc.sa.gov.au

Jen Fischer (Mon & Tues + Wed & Thurs mornings)
8440 6741
Jennifer.fischer@dfc.sa.gov.au

In Home Services Taxi Transport Project

The Taxi Transport Project is continuing to develop and encourage strategies to improve the experiences of older people using Taxi transport.

A site map of TQEH has been produced following discussions with TQEH regarding clients experiencing difficulties with pick up and set down issues with Taxi's. Alan Barratt, Training and Quality Services Coordinator at Taxi Council of SA (TCSA) has advised that the Map of TQEH has now been circulated to all drivers and is being included in driver training. The maps can also be utilised by service providers and circulated to clients / Carers.



tqeh site plan
(final).pdf

The In Home Services Workgroup has also been successful in facilitating the procurement of disused walking aids (walkers and wheelchairs) from Metro Equipment Service for use in Taxi Driver Training.

The new Nationally Accredited Taxi Driver Training is due to be implemented later this year. The new course has more emphasis on frail aged people rather than solely on transport of passengers with disabilities. There is also a greater emphasis on communication. Western Linkages Consumer Reps and IHS Workgroup members have been invited to attend the most relevant modules. This will enable the Consumer Reps and workgroup to get a first hand understanding of the training and further open communication for feedback and suggestions.

Seniors Wise SA is a new program of the Seniors Information Service. It is a volunteer based service that will provide a one stop shop for older people in South Australia to obtain information, support, awareness raising on a range of topics relevant to older people in the community. Seniors Wise will also encourage local businesses to provide Senior friendly services. IHS is encouraging the possibility of Taxi's companies obtaining Elder Friendly Accreditation through Seniors Wise.

Seniors Wise will be facilitating some focus groups with Consumers to establish the criteria for a business being deemed to be elder friendly. Discussion is occurring to ensure WLP Consumer Representatives have an opportunity to participate in this phase.



seniors wise
brochure.pdf

For Further information on the In Home Services Workgroup please contact Susan Sharp ph; 8440 6737 or email susan.sharp@dfc.sa.gov.au



Around the workgroups

Respite Workgroup

The workgroup has produced a snapshot of regional respite services, and we would like to know if your programs details are still current. It maps out the different types of respite available in the region. Please take a moment to check, the snapshot can be found at www.westernlinkages.org.au under the 'what we've done' tab.

At the end of each meeting a 'round robin' is held where participants share information about their program – any new initiatives, vacancies etc. It also provides an opportunity to learn from the experience of other service providers around the table. Meetings are held regularly on the fourth Tuesday of every month, 1-2.30pm at the Carelink and Carer Respite Centre, 77 Gibson Street Bowden. New participants would be most welcome!

Please contact Jen Fischer if you would like further information.

Interested in joining a workgroup? Western Linkages has new 'welcome' packs for new participants – pick one up at a meeting or contact us to request a copy to be posted out! Participation at workgroups and Steering Committee can provide excellent professional development opportunities in an out-of-agency environment. New participants are always welcome.

Did you know.....

That Western Linkages Steering Committee meetings are open to any service provider working with HACC eligible clients in the West? (as are all our workgroup meetings!) Meetings are held on the fourth Tuesday of every month, 3- 4.30pm. Email the Project Officers at westernlinkages.org.au if you would like to know more!!

Inter Agency Care Planning Principles

A guidance document for inter-agency care planning across the Western Linkages Workgroups is being developed. The objective of inter-agency care planning is to provide an opportunity for service providers to share expertise, information and solutions in complex client situations.

The principals articulate the objectives of this process and provide clarity around issues such as ensuring privacy and confidentiality are maintained and supporting mutual respect between agencies. The benefits of inter-agency care planning processes are also outlined. The value to the sector in supporting the role of Access2HomeCare in the West has also been an impetus for this initiative.



interagency care
planning principals.do

Brief news.....

Invitations have gone out for HACC funding round 26 – further information on OFTA's website or [click here](#). Closing on 22 Oct.

Welcome to the West! ACH Group head offices have moved from Halifax Street in the city to Mile End.

Attached:

Anglicare 'Drive your dollar further' flyer

Active Ageing 'Family Amble' flyer

Around the workgroups

Social Isolation Workgroup

Mind the Gap is our online survey collecting data on clients who have been turned away from a social support program in both the Western and Northern regions. No complicated boundaries around this work, it is simply an opportunity to collect data on clients where a program has been unable to meet their social support needs. So far we have collected data on over 100 clients. It takes less than two minutes to enter data, and any agency can participate.

As per the original schedule, Mind the Gap is due to close on October 30. So please don't wait until November to participate!!

A presentation on the findings will be given at the November Social Isolation Workgroup meeting. If you are interested in attending please let us know. The Chairperson of this workgroup is Francesca Costa from Anglicares Keeping Connected program.

It is with much enthusiasm that I am able to report that there are not three but FOUR separate but connected new projects in the pipelines!

1. You may recall that recently we held a presentation by Dr Mandy Stanley from Uni SA on the research findings on loneliness in older people. The research project was called 'Alone in a Crowd'. After the presentation we were keen to look at how we could work with the research findings and how they might influence practice on the ground. The Better Practice Project (BPP) has already developed a training module focused on keeping older people connected to their community. We are pleased to be working with Dr Stanley and Joyleen Thomas from BPP to develop an application for funding that will allow us to provide you with further sessions on the Alone in a Crowd research findings and to 'tweak' the BPP's 'keeping connected' training module in line with the research findings.

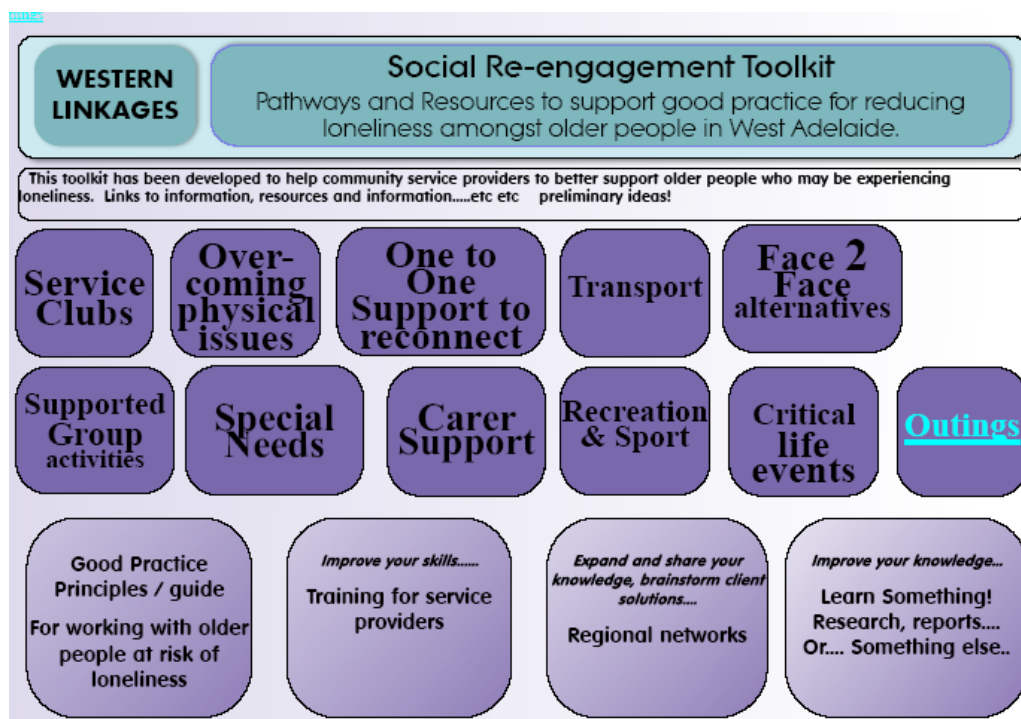
The outcome of this work for service providers will be a series of workshops and training sessions that will focus on providing a better understanding of the dimensions of loneliness in older people and training to support service providers to better engage older people experiencing loneliness. Another important component will be to reflect on what change has occurred in practices as a result.

2. Developing a narrative therapy group within a community garden setting. The idea is to draw upon peoples interest in food and gardening as a catalyst for engagement, for them to share how food and gardening has influenced their lives – their culture, traditions, gardening tips and recipes, and of course their own personal history. Much of which is being lost to the next generation, so the plan is also to document this wealth of information.



3. A yet-to-be-named 'event' in the Botanic Gardens that promotes the health and social engagement benefits of gardening and home grown produce. In line with the narrative therapy project, a love of food and gardening is a good reason for many older people to engage. We want to not only showcase the health/social benefits but also to support people to leave the event informed about how to get started on the next step of their personal journey towards a physically and mentally healthier lifestyle. We are thinking at this stage of combining the event with the Every Generation festival in October of next year and that it will be a cross regional event. An organising group will be established in the near future. Much enthusiasm has been generated and we look forward to further developing this project.

4. The Social Isolation Workgroup is considering establishment of a 'social engagement toolkit'. This is a web based tool that maps out pathways to social support services, but also provides information on a range of non-service based options. This is the first mockup used at the workgroup to canvas the idea:



Behind each button is a list and link to the programs that provide these types of assistance (not all the details, we don't have the resources to maintain that level of info and we also need to avoid duplicating other databases). Other categories might include 'keeping active' and 'share your story'. The intention is also to provide repository for all those local gems of information about non-service options that you can only pick up through experience and local contacts. It will also include links to online searchable databases. So as you can see more work is required and a second effort is currently being produced based on the groups feedback. The workgroup will discuss whether or not to proceed at the next Social Isolation workgroup on 27 October. If you have any thoughts or suggestions we would love to hear them! Like it or loathe it? We'd like to know! New participants are always welcome at the workgroup, or feel free to flick me an email with your thoughts at Jennifer.fischer@dfc.sa.gov.au.